

2023 BROKER PREVIEW



Hey California!

Good news, we've made some exciting changes to our benefits since we last met:



IMPROVED....

Acup/Chiro Services

County	Plan
Los Angeles	Classic Embrace Affirm
Orange	Classic Embrace
Riverside	Classic Heart First Affirm
San Bernardino	Classic Embrace
San Diego	Classic Alta Heart First

Over The Counter

County	Plan
Los Angeles Riverside San Bernardino San Diego	Classic Embrace Affirm
Los Angeles Orange County Riverside San Bernardino	Venture
San Diego	Alta
Ventura	Classic

Vision Allowances

County	Plan
Los Angeles	Prime Balance
Orange	Prime Heart First Balance
Riverside	Prime
San Bernardino	Prime
San Diego	Signature
Ventura	Options
Stanislaus	Classic Heart First
Santa Clara	Options
Alameda	Classic Heart First Balance
San Mateo	Classic Heart First Balance

LOWER....

Premium

County	Plan
San Francisco	Classic
Santa Clara	Classic
Napa/Sonoma	Heart First Balance Compass

Ambulance

County	Plan
Los Angeles	Embrace
Orange	Embrace
San Bernardino	Embrace
Stanislaus	Classic

Check Your Benefit Grids and Review Your Benefit Highlights

Friendly Reminders

Plan designs and service areas described in this document are pending government approval and are subject to change. For agent use only. Not intended for use as marketing materials for the general public.

Do not distribute, reproduce, edit or delete any portion without the express permission of SCAN Health Plan.

Not all benefits available in all SCAN plans; please refer to plan materials for specific coverage. Members must meet criteria for certain benefits.

Prescription copayments may vary by plan, county, pharmacy type, day supply, benefit stage, or in members who receive “Extra Help”.

2018 – 2022 Star rating applies to all plans offered by SCAN Health Plan except SCAN Healthy at Home and VillageHealth. Medicare evaluates plans based on a 5-Star rating system. Star ratings are calculated each year and may change from one year to the next.

Our Mission To Keep Seniors Healthy & Independent



CONTENTS

1

INTRODUCTION

2

2023 SCAN HIGHLIGHTS

3

SUPPLEMENTAL BENEFITS

4

PRODUCT PORTFOLIO

5

BROKER RESOURCES

LEADING THE INDUSTRY



2nd Largest in CA /
3rd Largest in Nation
Not-for-profit MAPD
270,000 members and growing



Recognized Brand
“Best” MAPD in CA
Four years in a row!



4.5 Stars in CA
Quality care & service
Five years in a row†



91% Satisfaction
(Medicare & You, 2022)
Highest ranking in CA*



Employer of Choice
Great Place to Work
Certified



Platinum Awards
Marketing & communication
Print, social, digital



†4.5 out of 5-star rating applies to all plans offered by SCAN Health Plan in California from 2018 to 2022 except SCAN Healthy at Home (HMO SNP) and VillageHealth (HMO-POS SNP) plans. Every year, Medicare evaluates plans based on a 5-star rating system. *As reported in Medicare & You 2022. Member rating of plan.

2023 SCAN approach to benefit design

SCAN members are loyal. We also know they have many options. Our belief is that if we offer value-add products that are competitive *and* dependable, we'll both retain and attract membership.

In 2023, we are focused on serving the dual-eligible population. As the only FIDE-SNP in California—and with no enrollment limits—SCAN provides a service-forward, all-inclusive health plan.



Drive Retention

Long-term, sustainable benefits to both remain competitive and differentiate



Grow Duals

Improve benefits and continue to offer best in class product(s) to existing and new service areas

Focus on benefits that keep our members healthy and independent

Our Mission To Keep Seniors Healthy & Independent



CONTENTS

1

INTRODUCTION

2

2023 SCAN HIGHLIGHTS

3

SUPPLEMENTAL BENEFITS

4

PRODUCT PORTFOLIO

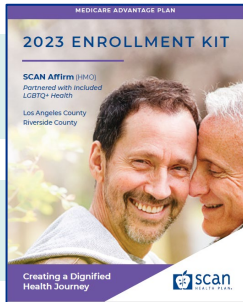
5

BROKER RESOURCES

NEW

SCAN AFFIRM partnered with Included LGBTQ+ Health

- Virtual behavioral health offering via LGBTQ+ affirming providers
- Companion care services to address isolation and exclusion
- Legal services reimbursement (e.g., durable power of attorney, living will, etc.)
- Lower Rx copays on specialty tier drugs (HIV drugs, hormone replacement, etc.)
- Included Health care navigation services including lifestyle support, peer groups, community resources and advocacy



Los Angeles and Riverside Counties

Creating a Dignified Health Journey

CLASSIC PLAN enhancements

SOUTHERN CALIFORNIA

2022 benefits Classic



2023 benefits Classic

Part B Premium Rebate	Not Covered	Not Covered
MOOP	\$499 (LA/OC) \$699 (RV/SB)	\$499 (LA/OC) \$699 (RV/SB)
Dental	Embedded dental +	Embedded dental + PPO Buy Up
OTC Allowance	\$50/quarter	\$75/quarter
Transportation	36 one-way trips	36 one-way trips
Vision Allowance	\$250 every 2 years	\$250 every year
Pharmacy Benefits	\$0 Tier 1; \$0 Tier 2; \$30 Tier 3	\$0 Tier 1; \$0 Tier 2; \$25 Tier 3
Health ^{tech} + (in home support)	Covered	Covered
Fitbit	Covered	Covered
Personal Caregiving	Covered	Covered ++hours

VENTURE Part B Give-Back



Venture Benefit Stepdown

Benefit	2022	2023
Part B premium rebate	\$125 (LA/OC) \$125 (RV/SB)	\$110 \$100
Maximum out of pocket	\$1000 (LA/OC) \$1000 (RV/SB)	No change \$1900
OTC	\$100 quarter	\$65 quarter
PCP/Specialist	\$0	No change
Hospital	\$0	No change
Dental	Comprehensive dental	No change
Transportation	24 one-way trips	No change
Vision	\$250 allowance	No change
Rx copays	\$0 Tier 1 & Tier 2	No change
Fitness Fitbit Other benefits	Covered Covered	No change

What is
changing

What is
NOT
changing

MORE EXTRAS for greater support

Core Extras

- **BETTER:** Vision
- **BETTER:** Dental
- Transportation
- **BETTER** Acupuncture
- **BETTER** Chiropractic
- Podiatry
- Hearing
- Travel Assurance

Solutions for Healthy Living

- **BETTER:** Over-the-Counter
- **NEW!** Healthy Foods Card
- Fitbit
- Gym benefit
- BrainHQ

Solutions for Independence

- **BETTER:** Returning to Home
- Home Advantage
- Emergency Response System
- **NEW!** Included Communities
- **NEW!** Papa Pals

Solutions for Virtual Care Access

- Telehealth (urgent care)
- **NEW!** Telehealth (behavioral health)
- **NEW!** Nurse Advise Line
- Health*tech*
- Health*tech+*
- Abridge (health conversations app)

Solutions for Caregivers

- Caregiver training & support
- Home-delivered meals
- Respite Care

Solutions for Togetherness

- SCAN Learning Communities
- Headspace (mindfulness app)

DENTAL it's everywhere



California

Limited Embedded

Comprehensive Embedded

Optional PPO Buy-Up

Limited preventive services

Robust preventive and restorative services

Obtain greater coverage for a premium

Arizona

Comprehensive Embedded

Optional PPO Buy-up

Robust preventive and restorative services

Obtain greater coverage for a premium

Nevada

Comprehensive Embedded

Optional PPO Buy-Up

Robust preventive and restorative services

Obtain greater coverage for a premium

Texas

Comprehensive Embedded

Optional PPO Buy-Up

Robust preventive and restorative services

Obtain greater coverage for a premium



DENTAL what's new in 2023



OPTIONAL PPO DENTAL PLAN

California

Premium: \$42

Dental Maximum: \$0 In-Network; \$2,000 Out-of-Network

Arizona

Premium: \$32

Dental Maximum: \$0 In-Network; \$2,000 Out-of-Network

Nevada

Premium: \$22

Dental Maximum: \$0 In-Network; \$2,000 Out-of-Network

Texas

Premium: \$25

Dental Maximum: \$0 In-Network; \$2,000 Out-of-Network



*not available in all plans; refer to benefit grids

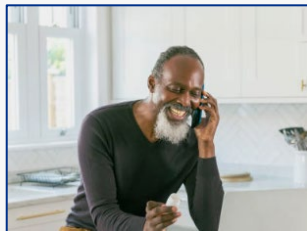
PHARMACY BENEFITS are getting better

2023 Enhancements...

\$0 Tiers 1 – 5 SCAN Connections

\$0 on all covered Part D drugs!

- ➔ ALL TIERS
- ➔ ALL MEDICATIONS
- ➔ ALL CONNECTIONS PLANS



Lower Tier 3 Preferred Copays

Lower Tier 3 Preferred copays

- As low as **\$25** on more than 250 brand medications (core plans)

...added to existing benefits

\$0 Tier 1 and Tier 2

\$0 copay on 90% of medications
SCAN members take

- More than 750 generics at no cost

Low Brand copays

Insulin Savings:

- \$0 SCAN Balance
- \$25 in other participating plans

\$20 off a 3-month supply
on over 500 brand medications

GROWING our footprint in 2023



In 2023, SCAN will serve Medicare beneficiaries in TEXAS

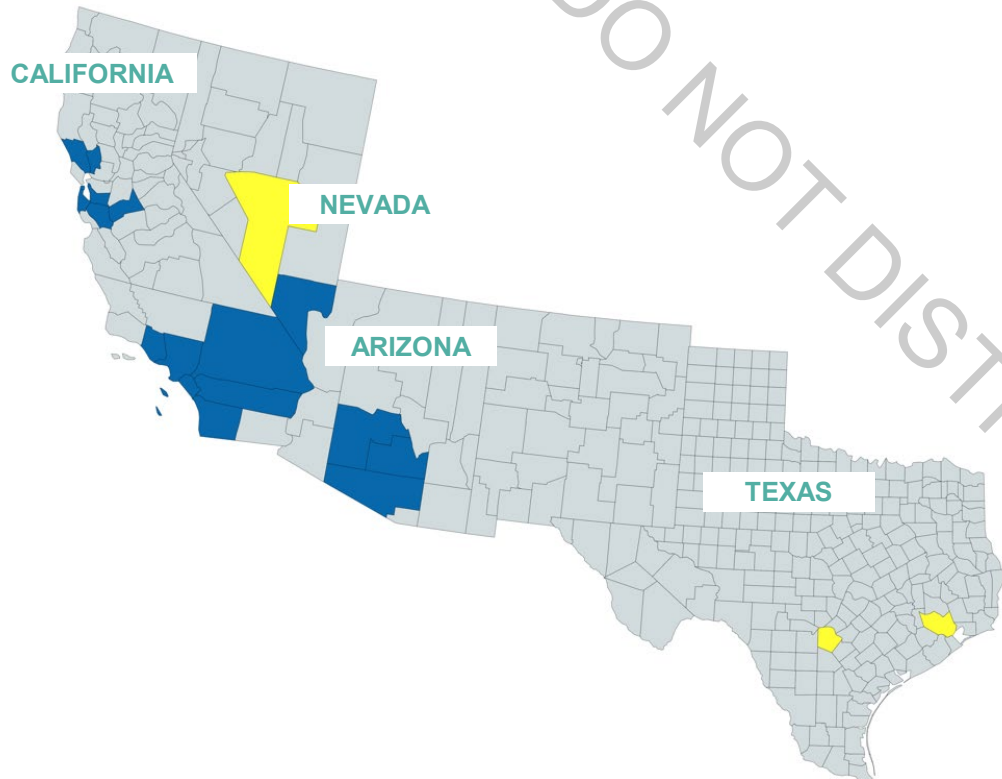
- **2 counties**
- Harris
- Bexar

TEXAS

	Harris County (Houston)	Bexar County (San Antonio)
Marketing Name	SCAN Health Plan	SCAN Health Plan
Medicare Eligibles	584,000	310,000
Products	Classic Balance HeartFirst Venture	Classic Balance HeartFirst Venture
Network	IntegraNet Health	IntegraNet Health Prospect Health Services Texas



GROWING our footprint in 2023



In 2023, SCAN will serve Medicare beneficiaries in more counties than ever:

- **6 counties** in Southern California
- **7 counties** in Northern California
- **3 counties** in Arizona
- **2 counties** in Nevada
- **2 counties** in Texas

SCAN CONNECTIONS

Fully Integrated Dual-Eligible Special Needs Plans (FIDE-SNP)

Medicare

People 65 or older, younger people with disabilities and people with End Stage Renal Disease (permanent kidney failure requiring dialysis or transplant).



Primary coverage includes hospitals and skilled nursing care, physician services and medications

Medicaid

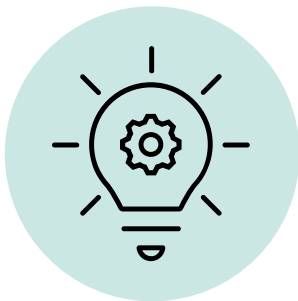
Depending on the state, some or all low-income people, families and children, pregnant women, the elderly and people with disabilities.



Secondary coverage includes premiums and cost sharing, long term care, transportation and other services (vary by state)

SCAN CONNECTIONS

We plan to improve our existing offering and grow membership



Innovate
the model of care



More benefits
that address what
matters



Expanding to
San Diego
and grow membership
in LA, Riverside, and
San Bernardino

SCAN CONNECTIONS keeps getting better

COUNTIES



- **San Diego**
- Los Angeles
- Riverside
- San Bernardino

Rx COPAY IMPROVEMENTS



- **\$0 for all prescription drugs Tiers 1-5**

BENEFIT IMPROVEMENTS



- **\$50 quarterly allowance food card**
- **\$500 vision allowance/year**
- **\$0 virtual behavioral health access**
- **\$0 nurse advice line**

\$0 COST SHARING



- For ALL Medicare and Medi-Cal covered services

ROBUST SUPPLEMENTAL BENEFITS



- Included dental with \$0 deep cleanings
- Included vision with \$500 allowance
- \$175 OTC allowance with rollover
- Unlimited transportation
- Unlimited worldwide ER

Our Mission To Keep Seniors Healthy & Independent



CONTENTS

1

INTRODUCTION

2

2023 SCAN HIGHLIGHTS

3

SUPPLEMENTAL BENEFITS

4

PRODUCT PORTFOLIO

5

BROKER RESOURCES

Core Extras

VISION

SCAN offers a routine vision care benefit for all plans. Plans vary, but in general, this benefit includes an eye exam and coverage for eyewear every 12 months.

Improved in 2023: every year allowances

DENTAL

All SCAN plans provide medically needed dental services that are covered by Original Medicare. In addition, most SCAN plans include preventive dental services and/or an option to sign up for supplemental dental coverage for an additional monthly premium.

Improved in 2023: Dental PPO optional buy up

TRANSPORTATION

This benefit provides transportation to medical appointments, pharmacies and dentists. A taxi, wheelchair van and other modes to meet members' physical needs are also available.

ACUPUNCTURE, CHIROPRACTIC & MASSAGE THERAPY

Many SCAN plans include self-directed access to routine acupuncture and chiropractic; some plans also offer therapeutic massage services. **Improved in 2023**

PODIATRY

SCAN covers routine podiatry services that usually aren't covered by Original Medicare. This routine care includes services such as removing calluses and trimming toenails.

HEARING

This benefit includes hearing exams and gives members a choice of hearing aids at a reduced cost.

SCAN TRAVEL ASSURANCE

SCAN coverage travels with members even when out of the country. Travel Assurance provides worldwide emergency and urgent care and helps facilitate claims reimbursement.

Solutions for Virtual Care Access

SCAN HEALTH^{tech}

SCAN's technology support line helps members use a computer, tablet or smartphone to access healthcare—and health-related information. A few areas for help can include:

- Skype/Zoom/FaceTime training for doctor visits
- telehealth visit overview
- setup on personal equipment (phone, tablet, or computer)
- prescription delivery setup
- *and more.*

SCAN HEALTH^{tech+}

SCAN's existing technology support line helps members use a computer, tablet or smartphone to access healthcare—and health-related information

ABRIDGE (Health Conversations App)

Abridge - health conversations app is a smartphone app that helps members understand and follow through on their doctor's advice. Members can record health conversations, get an interactive summary and share it with caregivers.

TELEHEALTH *Urgent Care and Behavioral Health*

This convenient option to urgent care lets members talk to a board-certified physician from the comfort of their home 24 hours a day, 7 days a week, 365 days a year for \$0.

Improved in 2023: Added behavioral health professionals

NEW! NURSE ADVISE LINE

Connect with a Nurse for advice based on your current symptoms, 24 hours a day, 7 days a week. Confer with qualified nurses to help decide where and how to seek medical care.

● ————— **Benefits that enable our members to receive timely access to health care services and supports.**

Solutions for Healthy Living

OVER-THE-COUNTER (OTC)

Members receive a quarterly over-the-counter (OTC) benefit to purchase commonly used OTC health products.

Improved in 2023: Increased allowances and better selection

FITBIT FITNESS TRACKER

Members can receive a Fitbit brand activity tracker every two years at no cost, helping them build and track healthy habits.

HEALTH CLUB

A health and fitness program that provides gym access, fitness classes and programs, on-demand workouts and other online resources.

BRAINHQ

BrainHQ provides online exercises that enhance memory, brain speed and other functions to boost brain health. BrainHQ is designed specifically for older adults and is offered at no cost to SCAN members.

NEW! FOOD CARD

Members receive a quarterly food card allowance to purchase healthy groceries at local retail locations.

● ————— **Benefits that support a healthy and active lifestyle.**

Solutions for Independence

EMERGENCY RESPONSE SYSTEM

A personal emergency response system (PERS) provides peace of mind and enables members to remain at home, living safely and independently. Another no-cost benefit.

RETURNING TO HOME

This benefit provides help with support and personal care services immediately following a discharge from a hospital or skilled nursing facility, including meals.

HOME ADVANTAGE

Members who have experienced a recent fall or illness that has caused them decreased capability can ask for a no-cost Home Advantage assessment and safety recommendations.

HOME DELIVERED MEALS

This program offers fully prepared meals, delivered to our members' doorstep when needed. Nearly 60 meal choices to select from at no cost.

NEW! INCLUDED COMMUNITIES

Connect with an Included Communities LGBTQ+ care navigator to find and receive affirming care and resources that meets the unique needs of the LGBTQ+ community.

Care navigation services including accessing affirming care, lifestyle support, peer groups, community resources and advocacy

NEW! PAPA PALS

Members have access to personal companions to assist with instrumental activities of daily living, such as transportation, household chores and companionship

Benefits that can help members stay independent in their own homes for as long as possible.

Solutions for Caregivers

CAREGIVER TRAINING

A series of classes that provide information, skills training and support for caregivers.

CHRONIC CONDITION MEALS

Helping members manage chronic health conditions includes ensuring they have proper nutrition. This benefit provides \$0 home-delivered meals.

RESPIRE CARE SERVICES

This benefit provides caregiving hours for members who experience a debilitating health condition, allowing their regular full-time, unpaid caregiver to take a break.

Improved in 2023: more in-home caregiving hours

Benefits that offer support for members who are caregiving or receiving caregiving services.

Solutions for Togetherness

SCAN LEARNING COMMUNITIES

SCAN Learning Communities bring like-minded people together for in-person health education classes to maintain good mental and physical health.

HEADSPACE

Headspace is a mindfulness and meditation app that can help counteract the negative side effects of loneliness, stress and anxiety.

Benefits that help members get connected, feel less alone and improve health.

Our Mission To Keep Seniors Healthy & Independent



CONTENTS

1

INTRODUCTION

2

2023 SCAN HIGHLIGHTS

3

SUPPLEMENTAL BENEFITS

4

PRODUCT PORTFOLIO

5

BROKER RESOURCES

CALIFORNIA

DO NOT DISTRIBUTE

NEW in 2023

Service Area/County List	Los Angeles, Riverside	San Diego	San Diego
Plan Name	SCAN Affirm partnered with Included LGBTQ+ Health	SCAN Connections (D-SNP)	SCAN Connections at Home (D-SNP)
Maximum Out-of-Pocket (MOOP)	\$499	\$8,300	\$8,300
Member Premium	\$0	\$0	\$0
Part B Premium Give Back	\$0	\$0	\$0
INPATIENT SERVICES			
PCP/ SPC Copay	\$0/\$0	\$0	\$0
Inpatient Hospital	\$0 (unlimited days)	\$0	\$0
Outpatient Hospital (Surgery)	\$0	\$0	\$0
Diagnostic Radiology	\$0	\$0	\$0
Urgent Care	\$0	\$0	\$0
RX COPAYS			
Preferred Retail	\$0/\$0/\$30/\$95/25%	\$0	\$0
Standard Retail	\$7/\$15/\$47/\$100/25%	\$0	\$0
Insulin Savings (T3)	\$25/\$35	\$0	\$0
SUPPLEMENTAL BENEFITS			
CORE EXTRAS	Vision, Dental, Transportation, Chiro/Acu, Podiatry, Hearing, SCAN Travel Assurance, SCAN on the go	Vision, Dental, Transportation, Chiro/Acu, Therapeutic Massage, Podiatry, Hearing, SCAN Travel Assurance, SCAN on the go	Vision, Dental, Transportation, Chiro/Acu, Therapeutic Massage, Podiatry, Hearing, SCAN Travel Assurance, SCAN on the go
SOL. FOR VIRTUAL CARE ACCESS	Abridge, Telehealth, HEALTHtech+, Nurse Advice Line	Abridge, Telehealth, Behavioral Health TeleHealth, HEALTHtech+, Nurse Advice	Abridge, Telehealth, Behavioral Health TeleHealth, HEALTHtech+, Nurse Advice
SOL. FOR HEALTHY LIVING	Gym, FitBit, OTC, BrainHQ	Gym, FitBit, OTC, Grocery Card	Gym, FitBit, OTC, Healthy Foods Card
SOL. FOR INDEPENDENCE	Returning to Home, Home Advantage, PERS, Included Communities	Returning to Home, Home Advantage, PERS	PERS
SOL. FOR CAREGIVERS	Respite Care, Caregiver Training, Chronic Condition Meals, Companion Care, Legal	Respite Care, Caregiver Training, Chronic Condition Meals	Respite Care, Caregiver Training, Chronic Condition Meals
SOL. FOR TOGETHERNESS	Headspace, SCAN Learning Communities	Headspace, SCAN Learning Communities	Headspace, SCAN Learning Communities

Los Angeles

Service Area/County List	Los Angeles	Los Angeles	Los Angeles, Orange	Los Angeles, Orange
Plan Name	SCAN Classic	SCAN Prime	SCAN Venture	SCAN Balance (C-SNP)
Maximum Out-of-Pocket (MOOP)	\$499	\$299	\$1,000	\$499
Member Premium	\$0	\$25	\$0	\$0
Part B Premium Give Back	\$0	\$0	\$110	\$0
INPATIENT SERVICES				
PCP/ SPC Copay	\$0/\$0	\$0/\$0	\$0/\$0	\$0/\$0
Inpatient Hospital	\$0 (unlimited days)	\$0 (unlimited days)	\$0 (unlimited days)	\$0 (unlimited days)
Outpatient Hospital (Surgery)	\$0	\$0	\$225	\$0/\$0
Diagnostic Radiology	\$0	\$0	\$0 mammo; \$75 other	\$0
Urgent Care	\$0	\$0	\$0	\$0
RX COPAYS				
Preferred Retail	\$0/\$0/\$25/\$95/33%	\$0/\$0/\$25/\$95/33%	\$0/\$0/\$25/\$95/33%	\$0/\$0/\$25/\$95/33%
Standard Retail	\$7/\$15/\$47/\$100/33%	\$5/\$12/\$47/\$100/33%	\$7/\$15/\$47/\$100/33%	\$5/\$9/\$35/\$100/33%
Insulin Savings (T3)	\$25/\$35	\$25/\$35	\$25/\$35	\$0/\$0
SUPPLEMENTAL BENEFITS				
CORE EXTRAS	Vision, Dental, Transportation, Chiro/Acu, Podiatry, Hearing, SCAN Travel Assurance, SCAN on the go	Vision, Dental, Transportation, Chiro/Acu, Podiatry, Hearing, SCAN Travel Assurance, SCAN on the go	Vision, Dental, Transportation, Chiro/Acu, Podiatry, Hearing, SCAN Travel Assurance, SCAN on the go	Vision, Dental, Transportation, Chiro/Acu, Podiatry, Hearing, SCAN Travel Assurance, SCAN on the go
SOL. FOR VIRTUAL CARE ACCESS	Abridge, Telehealth, HEALTHtech+, Nurse Advice Line	Abridge, Telehealth, HEALTHtech+, Nurse Advice Line	Abridge, Telehealth, HEALTHtech+, Nurse Advice Line	Abridge, Telehealth, HEALTHtech+, Nurse Advice Line
SOL. FOR HEALTHY LIVING	Gym, FitBit, OTC, BrainHQ	Gym, FitBit, OTC, BrainHQ	Gym, FitBit, OTC, BrainHQ	Gym, FitBit, OTC, BrainHQ
SOL. FOR INDEPENDENCE	Returning to Home, Home Advantage, PERS	Returning to Home, Home Advantage, PERS	Returning to Home, Home Advantage, PERS	Returning to Home, Home Advantage, PERS
SOL. FOR CAREGIVERS	Respite Care, Caregiver Training, Chronic Condition Meals	Respite Care, Caregiver Training, Chronic Condition Meals	Respite Care, Caregiver Training, Chronic Condition Meals	Respite Care, Caregiver Training, Chronic Condition Meals
SOL. FOR TOGETHERNESS	Headspace, SCAN Learning Communities	Headspace, SCAN Learning Communities	Headspace, SCAN Learning Communities	Headspace, SCAN Learning Communities

Orange

Service Area/County List	Orange	Orange	Los Angeles, Orange
Plan Name	SCAN Classic	SCAN Prime	SCAN Venture
Maximum Out-of-Pocket (MOOP)	\$499	\$299	\$1,000
Member Premium	\$0	\$26	\$0
Part B Premium Give Back	\$0	\$0	\$110
INPATIENT SERVICES			
PCP/ SPC Copay	\$0/\$0	\$0/\$0	\$0/\$0
Inpatient Hospital	\$0 (unlimited days)	\$0 (unlimited days)	\$0 (unlimited days)
Outpatient Hospital (Surgery)	\$0	\$0	\$225
Diagnostic Radiology	\$0	\$0	\$0 mammo; \$75 other
Urgent Care	\$0	\$0	\$0
RX COPAYS			
Preferred Retail	\$0/\$0/\$25/\$95/33%	\$0/\$0/\$25/\$95/33%	\$0/\$0/\$25/\$95/33%
Standard Retail	\$7/\$15/\$47/\$100/33%	\$5/\$12/\$47/\$100/33%	\$7/\$15/\$47/\$100/33%
Insulin Savings (T3)	\$25/\$35	\$25/\$35	\$25/\$35
SUPPLEMENTAL BENEFITS			
CORE EXTRAS	Vision, Dental, Transportation, Chiro/Acu, Podiatry, Hearing, SCAN Travel Assurance, SCAN on the go	Vision, Dental, Transportation, Chiro/Acu, Podiatry, Hearing, SCAN Travel Assurance, SCAN on the go	Vision, Dental, Transportation, Chiro/Acu, Podiatry, Hearing, SCAN Travel Assurance, SCAN on the go
SOL. FOR VIRTUAL CARE ACCESS	Abridge, Telehealth, HEALTHtech+, Nurse Advice Line	Abridge, Telehealth, HEALTHtech+, Nurse Advice Line	Abridge, Telehealth, HEALTHtech+, Nurse Advice Line
SOL. FOR HEALTHY LIVING	Gym, FitBit, OTC, BrainHQ	Gym, FitBit, OTC, BrainHQ	Gym, FitBit, OTC, BrainHQ
SOL. FOR INDEPENDENCE	Returning to Home, Home Advantage, PERS	Returning to Home, Home Advantage, PERS	Returning to Home, Home Advantage, PERS
SOL. FOR CAREGIVERS	Respite Care, Caregiver Training, Chronic Condition Meals	Respite Care, Caregiver Training, Chronic Condition Meals	Respite Care, Caregiver Training, Chronic Condition Meals
SOL. FOR TOGETHERNESS	Headspace, SCAN Learning Communities	Headspace, SCAN Learning Communities	Headspace, SCAN Learning Communities

Orange

Service Area/County List	Orange	Los Angeles, Orange
Plan Name	SCAN Heart First (C-SNP)	SCAN Balance (C-SNP)
Maximum Out-of-Pocket (MOOP)	\$499	\$499
Member Premium	\$0	\$0
Part B Premium Give Back	\$0	\$0
INPATIENT SERVICES		
PCP/ SPC Copay	\$0/\$0	\$0/\$0
Inpatient Hospital	\$0 (unlimited days)	\$0 (unlimited days)
Outpatient Hospital (Surgery)	\$0	\$0/\$0
Diagnostic Radiology	\$0	\$0
Urgent Care	\$0	\$0
RX COPAYS		
Preferred Retail	\$0/\$0/\$25/\$95/33%	\$0/\$0/\$25/\$95/33%
Standard Retail	\$5/\$9/\$47/\$100/33%	\$5/\$9/\$35/\$100/33%
Insulin Savings (T3)	\$25/\$35	\$0/\$0
SUPPLEMENTAL BENEFITS		
CORE EXTRAS	Vision, Dental, Transportation, Chiro/Acu, Podiatry, Hearing, SCAN Travel Assurance, SCAN on the go	Vision, Dental, Transportation, Chiro/Acu, Podiatry, Hearing, SCAN Travel Assurance, SCAN on the go
SOL FOR VIRTUAL CARE ACCESS	Abridge, Telehealth, HEALTHtech+, Nurse Advice Line	Abridge, Telehealth, HEALTHtech+, Nurse Advice Line
SOL FOR HEALTHY LIVING	Gym, FitBit, OTC, BrainHQ	Gym, FitBit, OTC, BrainHQ
SOL FOR INDEPENDENCE	Returning to Home, Home Advantage, PERS	Returning to Home, Home Advantage, PERS
SOL FOR CAREGIVERS	Respite Care, Caregiver Training, Chronic Condition Meals	Respite Care, Caregiver Training, Chronic Condition Meals
SOL FOR TOGETHERNESS	Headspace, SCAN Learning Communittees	Headspace, SCAN Learning Communittees

Multi-County FIDE-SNP

Service Area/County List	Los Angeles, Riverside, San Bernardino, San Diego	Los Angeles, Riverside, San Bernardino, San Diego
Plan Name	SCAN Connections (FIDE-SNP)	SCAN Connections at Home (FIDE-SNP)
Maximum Out-of-Pocket (MOOP)	\$8,300	\$8,300
Member Premium	\$0	\$0
Part B Premium Give Back	\$0	\$0
INPATIENT SERVICES		
PCP/ SPC Copay	\$0	\$0
Inpatient Hospital	\$0	\$0
Outpatient Hospital (Surgery)	\$0	\$0
Diagnostic Radiology	\$0	\$0
Urgent Care	\$0	\$0
RX COPAYS		
Preferred Retail	\$0	\$0
Standard Retail	\$0	\$0
Insulin Savings (T3)	\$0	\$0
SUPPLEMENTAL BENEFITS		
CORE EXTRAS	Vision, Dental, Transportation, Chiro/Acu, Therapeutic Massage, Podiatry, Hearing, SCAN Travel Assurance, SCAN on the go	Vision, Dental, Transportation, Chiro/Acu, Therapeutic Massage, Podiatry, Hearing, SCAN Travel Assurance, SCAN on the go
SOL FOR VIRTUAL CARE ACCESS	Abridge, Telehealth, Behavioral Health TeleHealth, HEALTHtech+, Nurse Advice Line	Abridge, Telehealth, Behavioral Health TeleHealth, HEALTHtech+, Nurse Advice Line
SOL FOR HEALTHY LIVING	Gym, FitBit, OTC, Grocery Card	Gym, FitBit, OTC, Healthy Foods Card
SOL FOR INDEPENDENCE	Returning to Home, Home Advantage, PERS	PERS
SOL FOR CAREGIVERS	Respite Care, Caregiver Training, Chronic Condition Meals	Respite Care, Caregiver Training, Chronic Condition Meals
SOL FOR TOGETHERNESS	Headspace, SCAN Learning Communities	Headspace, SCAN Learning Communities

Riverside

Service Area/County List	Riverside	Riverside	Riverside, San Bernardino	Riverside, San Bernardino
Plan Name	SCAN Classic	SCAN Prime	SCAN Venture	SCAN Heart First (C-SNP)
Maximum Out-of-Pocket (MOOP)	\$699	\$299	\$1,900	\$699
Member Premium	\$0	\$23	\$0	\$0
Part B Premium Give Back	\$0	\$0	\$100	\$0
INPATIENT SERVICES				
PCP/ SPC Copay	\$0/\$0	\$0/\$0	\$0/\$0	\$0/\$0
Inpatient Hospital	\$0 (unlimited days)	\$0 (unlimited days)	\$0 (unlimited days)	\$0 (unlimited days)
Outpatient Hospital (Surgery)	\$50	\$50	\$225	\$50
Diagnostic Radiology	\$25	\$25	\$0 mammo; \$75 other	\$25
Urgent Care	\$0	\$0	\$0	\$0
RX COPAYS				
Preferred Retail	\$0/\$0/\$25/\$95/33%	\$0/\$0/\$25/\$95/33%	\$0/\$0/\$30/\$95/33%	\$0/\$0/\$30/\$95/33%
Standard Retail	\$9/\$15/\$47/\$100/33%	\$7/\$14/\$47/\$100/33%	\$7/\$15/\$47/\$100/33%	\$7/\$14/\$47/\$100/33%
Insulin Savings (T3)	\$25/\$35	\$25/\$35	\$25/\$35	\$25/\$35
SUPPLEMENTAL BENEFITS				
CORE EXTRAS	Vision, Dental, Transportation, Chiro/Acu, Podiatry, Hearing, SCAN Travel Assurance, SCAN on the go	Vision, Dental, Transportation, Chiro/Acu, Podiatry, Hearing, SCAN Travel Assurance, SCAN on the go	Vision, Dental, Transportation, Chiro/Acu, Podiatry, Hearing, SCAN Travel Assurance, SCAN on the go	Vision, Dental, Transportation, Chiro/Acu, Podiatry, Hearing, SCAN Travel Assurance, SCAN on the go
SOL FOR VIRTUAL CARE ACCESS	Abridge, Telehealth, HEALTHtech+, Nurse Advice Line	Abridge, Telehealth, HEALTHtech+, Nurse Advice Line	Abridge, Telehealth, HEALTHtech+, Nurse Advice Line	Abridge, Telehealth, HEALTHtech+, Nurse Advice Line
SOL FOR HEALTHY LIVING	Gym, FitBit, OTC, BrainHQ	Gym, FitBit, OTC, BrainHQ	Gym, FitBit, OTC, BrainHQ	Gym, FitBit, OTC, BrainHQ
SOL FOR INDEPENDENCE	Returning to Home, Home Advantage, PERS	Returning to Home, Home Advantage, PERS	Returning to Home, Home Advantage, PERS	Returning to Home, Home Advantage, PERS
SOL FOR CAREGIVERS	Respite Care, Caregiver Training, Chronic Condition Meals	Respite Care, Caregiver Training, Chronic Condition Meals	Respite Care, Caregiver Training, Chronic Condition Meals	Respite Care, Caregiver Training, Chronic Condition Meals
SOL FOR TOGETHERNESS	Headspace, SCAN Learning Communities	Headspace, SCAN Learning Communities	Headspace, SCAN Learning Communities	Headspace, SCAN Learning Communities

San Bernardino

Service Area/County List	San Bernardino	San Bernardino	Riverside, San Bernardino	Riverside, San Bernardino
Plan Name	SCAN Classic	SCAN Prime	SCAN Venture	SCAN Heart First (C-SNP)
Maximum Out-of-Pocket (MOOP)	\$699	\$299	\$1,900	\$699
Member Premium	\$0	\$23	\$0	\$0
Part B Premium Give Back	\$0	\$0	\$100	\$0
INPATIENT SERVICES				
PCP/ SPC Copay	\$0/\$0	\$0/\$0	\$0/\$0	\$0/\$0
Inpatient Hospital	\$0 (unlimited days)	\$0 (unlimited days)	\$0 (unlimited days)	\$0 (unlimited days)
Outpatient Hospital (Surgery)	\$50	\$50	\$225	\$50
Diagnostic Radiology	\$25	\$25	\$0 mammo; \$75 other	\$25
Urgent Care	\$0	\$0	\$0	\$0
RX COPAYS				
Preferred Retail	\$0/\$0/\$30/\$95/33%	\$0/\$0/\$30/\$95/33%	\$0/\$0/\$30/\$95/33%	\$0/\$0/\$30/\$95/33%
Standard Retail	\$9/\$15/\$47/\$100/33%	\$7/\$14/\$47/\$100/33%	\$7/\$15/\$47/\$100/33%	\$7/\$14/\$47/\$100/33%
Insulin Savings (T3)	\$25/\$35	\$25/\$35	\$25/\$35	\$25/\$35
SUPPLEMENTAL BENEFITS				
CORE EXTRAS	Vision, Dental, Transportation, Chiro/Acu, Podiatry, Hearing, SCAN Travel Assurance, SCAN on the go	Vision, Dental, Transportation, Chiro/Acu, Podiatry, Hearing, SCAN Travel Assurance, SCAN on the go	Vision, Dental, Transportation, Chiro/Acu, Podiatry, Hearing, SCAN Travel Assurance, SCAN on the go	Vision, Dental, Transportation, Chiro/Acu, Podiatry, Hearing, SCAN Travel Assurance, SCAN on the go
SOL. FOR VIRTUAL CARE ACCESS	Abridge, Telehealth, HEALTHtech+, Nurse Advice Line	Abridge, Telehealth, HEALTHtech+, Nurse Advice Line	Abridge, Telehealth, HEALTHtech+, Nurse Advice Line	Abridge, Telehealth, HEALTHtech+, Nurse Advice Line
SOL. FOR HEALTHY LIVING	Gym, FitBit, OTC, BrainHQ	Gym, FitBit, OTC, BrainHQ	Gym, FitBit, OTC, BrainHQ	Gym, FitBit, OTC, BrainHQ
SOL. FOR INDEPENDENCE	Returning to Home, Home Advantage, PERS	Returning to Home, Home Advantage, PERS	Returning to Home, Home Advantage, PERS	Returning to Home, Home Advantage, PERS
SOL. FOR CAREGIVERS	Respite Care, Caregiver Training, Chronic Condition Meals	Respite Care, Caregiver Training, Chronic Condition Meals	Respite Care, Caregiver Training, Chronic Condition Meals	Respite Care, Caregiver Training, Chronic Condition Meals
SOL. FOR TOGETHERNESS	Headspace, SCAN Learning Communities	Headspace, SCAN Learning Communities	Headspace, SCAN Learning Communities	Headspace, SCAN Learning Communities

San Diego

Service Area/County List	San Diego	San Diego	San Diego	San Diego
Plan Name	Scripps Classic offered by SCAN Health Plan	SCAN Alta	Scripps Signature offered by SCAN Health Plan	Scripps Heart First offered by SCAN Health Plan (C-SNP)
Maximum Out-of-Pocket (MOOP)	\$3,400	\$900	\$2,500	\$3,400
Member Premium	\$0	\$0	\$74	\$26
Part B Premium Give Back	\$0	\$0	\$0	\$0
INPATIENT SERVICES				
PCP/ SPC Copay	\$10/\$35	\$0/\$0	\$10/\$25	\$15/\$35
Inpatient Hospital	\$295 per day (1-7) \$0 per day (8-90+)	\$0 per day (1-3) \$50 per day (4-7) \$0 per day (8-90+)	\$150 per day (1-5) \$0 per day (6-90+)	\$295 per day (1-7) \$0 per day (8-90+)
Outpatient Hospital (Surgery)	\$300	\$50	\$75	\$300
Diagnostic Radiology	\$50	\$0	\$50	\$50
Urgent Care	\$30	\$0	\$25	\$30
RX COPAYS				
Preferred Retail	\$0/\$5/\$42/\$95/33%	\$0/\$0/\$25/\$95/33%	\$0/\$0/\$30/\$95/33%	\$0/\$5/\$42/\$95/33%
Standard Retail	\$9/\$15/\$47/\$100/33%	\$7/\$15/\$47/\$100/33%	\$9/\$12/\$47/\$100/33%	\$7/\$12/\$47/\$100/33%
Insulin Savings (T3)	\$25/\$35	\$25/\$35	\$25/\$35	\$25/\$35
SUPPLEMENTAL BENEFITS				
CORE EXTRAS	Vision, Dental, Transportation, Chiro/Acu, Podiatry, Hearing, SCAN Travel Assurance, SCAN on the go	Vision, Dental, Transportation, Chiro/Acu, Podiatry, Hearing, SCAN Travel Assurance, SCAN on the go	Vision, Dental, Transportation, Chiro/Acu, Podiatry, Hearing, SCAN Travel Assurance, SCAN on the go	Vision, Transportation, Chiro/Acu, Podiatry, Hearing, SCAN Travel Assurance, SCAN on the go
SOL FOR VIRTUAL CARE ACCESS	Abridge, Telehealth, HEALTHtech+, Nurse Advice Line	Abridge, Telehealth, HEALTHtech+, Nurse Advice Line	Abridge, Telehealth, HEALTHtech+, Nurse Advice Line	Abridge, Telehealth, HEALTHtech+, Nurse Advice Line
SOL FOR HEALTHY LIVING	Gym, FitBit, OTC, BrainHQ	Gym, FitBit, OTC, BrainHQ	Gym, FitBit, OTC, BrainHQ	Gym, BrainHQ
SOL FOR INDEPENDENCE	Returning to Home, Home Advantage, PERS	Returning to Home, Home Advantage, PERS	Returning to Home, Home Advantage, PERS	Returning to Home, Home Advantage, PERS
SOL FOR CAREGIVERS	Respite Care, Caregiver Training, Chronic Condition Meals	Respite Care, Caregiver Training, Chronic Condition Meals	Respite Care, Caregiver Training, Chronic Condition Meals	Respite Care, Caregiver Training, Chronic Condition Meals
SOL FOR TOGETHERNESS	Headspace, SCAN Learning Communities	Headspace, SCAN Learning Communities	Headspace, SCAN Learning Communities	Headspace, SCAN Learning Communities

Ventura

Service Area/County List	Ventura	Ventura
Plan Name	SCAN Classic	SCAN Options
Maximum Out-of-Pocket (MOOP)	\$3,000	\$2,200
Member Premium	\$0	\$0
Part B Premium Give Back	\$0	\$0
INPATIENT SERVICES		
PCP/ SPC Copay	\$5/\$10	\$0/\$0
Inpatient Hospital	\$325 per day (1-5)	\$0 per day (1-4)
	\$0 per day (6-90+)	\$50 per day (5-10)
		\$0 per day (11-90+)
Outpatient Hospital (Surgery)	\$275	\$150
Diagnostic Radiology	20%	\$0
Urgent Care	\$8	\$0
RX COPAYS		
Preferred Retail	\$0/\$0/\$37/\$95/33%	\$0/\$0/\$37/\$95/33%
Standard Retail	\$10/\$15/\$47/\$100/33%	\$10/\$15/\$47/\$100/33%
Insulin Savings (T3)	\$25/\$35	\$25/\$35
SUPPLEMENTAL BENEFITS		
CORE EXTRAS	Vision, Dental, Transportation, Chiro/Acu, Podiatry, Hearing, SCAN Travel Assurance, SCAN on the go	Vision, Dental, Transportation, Chiro/Acu, Podiatry, Hearing, SCAN Travel Assurance, SCAN on the go
SOL FOR VIRTUAL CARE ACCESS	Abridge, Telehealth, HEALTHtech+, Nurse Advice Line	Abridge, Telehealth, HEALTHtech+, Nurse Advice Line
SOL FOR HEALTHY LIVING	Gym, FitBit, OTC, BrainHQ	Gym, FitBit, OTC, BrainHQ
SOL FOR INDEPENDENCE	Returning to Home, Home Advantage, PERS	Returning to Home, Home Advantage, PERS
SOL FOR CAREGIVERS	Respite Care, Caregiver Training, Chronic Condition Meals	Respite Care, Caregiver Training, Chronic Condition Meals
SOL FOR TOGETHERNESS	Headspace, SCAN Learning Communities	Headspace, SCAN Learning Communities

San Mateo

Service Area/County List	San Mateo	San Mateo	San Mateo
Plan Name	SCAN Classic	SCAN Balance (C-SNP)	SCAN Heart First (C-SNP)
Maximum Out-of-Pocket (MOOP)	\$4,500	\$4,500	\$4,500
Member Premium	\$0	\$0	\$0
Part B Premium Give Back	\$0	\$0	\$0
INPATIENT SERVICES			
PCP/ SPC Copay	\$0/\$10	\$0/\$10	\$0/\$10
Inpatient Hospital	\$200 per day (1-5)	\$200 per day (1-5)	\$200 per day (1-5)
	\$0 per day (6-90+)	\$0 per day (6-90+)	\$0 per day (6-90+)
Outpatient Hospital (Surgery)	\$200	\$200	\$200
Diagnostic Radiology	\$100	\$100	\$100
Urgent Care	\$25	\$25	\$25
RX COPAYS			
Preferred Retail	\$0/\$0/\$40/\$90/33%	\$0/\$0/\$40/\$90/33%	\$0/\$0/\$40/\$90/33%
Standard Retail	\$5/\$10/\$47/\$100/33%	\$5/\$10/\$47/\$100/33%	\$5/\$10/\$47/\$100/33%
Insulin Savings (T3)	\$25/\$35	\$0/\$0	\$25/\$35
SUPPLEMENTAL BENEFITS			
CORE EXTRAS	Vision, Dental, Transportation, Podiatry, Hearing, SCAN Travel Assurance, SCAN on the go	Vision, Dental, Transportation, Podiatry, Hearing, SCAN Travel Assurance, SCAN on the go	Vision, Dental, Transportation, Podiatry, Hearing, SCAN Travel Assurance, SCAN on the go
SOL FOR VIRTUAL CARE ACCESS	Abridge, Telehealth, HEALTHtech, Nurse Advice Line	Abridge, Telehealth, HEALTHtech, Nurse Advice Line	Abridge, Telehealth, HEALTHtech, Nurse Advice Line
SOL FOR HEALTHY LIVING	FitBit, Gym, BrainHQ, OTC	Gym, FitBit, OTC, BrainHQ	Gym, FitBit, OTC, BrainHQ
SOL FOR INDEPENDENCE	Returning to Home, Home Advantage, PERS	Returning to Home, Home Advantage, PERS	Returning to Home, Home Advantage, PERS
SOL FOR CAREGIVERS	Caregiver Training, Chronic Condition Meals	Respite Care, Caregiver Training, Chronic Condition Meals	Respite Care, Caregiver Training, Chronic Condition Meals
SOL FOR TOGETHERNESS	Headspace, SCAN Learning Communities	Headspace, SCAN Learning Communities	Headspace, SCAN Learning Communities

Alameda

Service Area/County List	Alameda	Alameda	Alameda
Plan Name	SCAN Classic	SCAN Balance (C-SNP)	SCAN Heart First (C-SNP)
Maximum Out-of-Pocket (MOOP)	\$4,000	\$4,000	\$4,000
Member Premium	\$0	\$0	\$0
Part B Premium Give Back	\$0	\$0	\$0
INPATIENT SERVICES			
PCP/ SPC Copay	\$0/\$10	\$0/\$10	\$0/\$10
Inpatient Hospital	\$250 per day (1-6) \$0 per day (7-90+)	\$250 per day (1-6) \$0 per day (7-90+)	\$250 per day (1-6) \$0 per day (7-90+)
Outpatient Hospital (Surgery)	\$125	\$125	\$125
Diagnostic Radiology	\$0	\$0	\$0
Urgent Care	\$10	\$10	\$10
RX COPAYS			
Preferred Retail	\$0/\$0/\$37/\$90/33%	\$0/\$0/\$40/\$90/33%	\$0/\$0/\$40/\$90/33%
Standard Retail	\$5/\$10/\$47/\$100/33%	\$5/\$10/\$47/\$100/33%	\$5/\$10/\$47/\$100/33%
Insulin Savings (T3)	\$25/\$35	\$0/\$0	\$25/\$35
SUPPLEMENTAL BENEFITS			
CORE EXTRAS	Vision, Dental, Transportation, Podiatry, Hearing, SCAN Travel Assurance, SCAN on the go	Vision, Dental, Transportation, Podiatry, Hearing, SCAN Travel Assurance, SCAN on the go	Vision, Dental, Transportation, Podiatry, Hearing, SCAN Travel Assurance, SCAN on the go
SOL. FOR VIRTUAL CARE ACCESS	Abridge, Telehealth, HEALTHtech, Nurse Advice Line	Abridge, Telehealth, HEALTHtech, Nurse Advice Line	Abridge, Telehealth, HEALTHtech, Nurse Advice Line
SOL. FOR HEALTHY LIVING	Gym, FitBit, OTC, BrainHQ	Gym, FitBit, OTC, BrainHQ	Gym, FitBit, OTC, BrainHQ
SOL. FOR INDEPENDENCE	Returning to Home, Home Advantage, PERS	Returning to Home, Home Advantage, PERS	Returning to Home, Home Advantage, PERS
SOL. FOR CAREGIVERS	Caregiver Training, Chronic Condition Meals	Respite Care, Caregiver Training, Chronic Condition Meals	Respite Care, Caregiver Training, Chronic Condition Meals
SOL. FOR TOGETHERNESS	Headspace, SCAN Learning Communities	Headspace, SCAN Learning Communities	Headspace, SCAN Learning Communities

Stanislaus

Service Area/County List	Stanislaus	Stanislaus
Plan Name	SCAN Classic	SCAN Balance (C-SNP)
Maximum Out-of-Pocket (MOOP)	\$2,900	\$2,900
Member Premium	\$0	\$0
Part B Premium Give Back	\$0	\$0
INPATIENT SERVICES		
PCP/ SPC Copay	\$0/\$0-\$10	\$0/\$0-\$10
Inpatient Hospital	\$75 per day (1-5)	\$75 per day (1-5)
	\$0 per day (6-90+)	\$0 per day (6-90+)
Outpatient Hospital (Surgery)	\$125	\$125
Diagnostic Radiology	\$0 (ultrasound); \$100 other	\$0 (ultrasound); \$100 other
Urgent Care	\$0	\$0
RX COPAYS		
Preferred Retail	\$0/\$0/\$40/\$90/33%	\$0/\$0/\$30/\$85/33%
Standard Retail	\$5/\$15/\$47/\$100/33%	\$5/\$15/\$45/\$95/33%
Insulin Savings (T3)	\$25/\$35	\$0/\$0
SUPPLEMENTAL BENEFITS		
CORE EXTRAS	Vision, Dental, Transportation, Chiro/Acu, Podiatry, Hearing, SCAN Travel Assurance, SCAN on the go	Vision, Dental, Transportation, Chiro/Acu, Podiatry, Hearing, SCAN Travel Assurance, SCAN on the go
SOL. FOR VIRTUAL CARE ACCESS	Abridge, Telehealth, HEALTHtech, Nurse Advice Line	Abridge, Telehealth, HEALTHtech, Nurse Advice Line
SOL. FOR HEALTHY LIVING	Gym, BrainHQ, OTC	Gym, OTC, BrainHQ
SOL. FOR INDEPENDENCE	Returning to Home, Home Advantage, PERS	Returning to Home, Home Advantage, PERS
SOL. FOR CAREGIVERS	Respite Care, Caregiver Training, Chronic Condition Meals	Respite Care, Caregiver Training, Chronic Condition Meals
SOL. FOR TOGETHERNESS	Headspace, SCAN Learning Communities	Headspace, SCAN Learning Communities

Napa and Sonoma

Service Area/County List	Napa, Sonoma	Napa, Sonoma	Napa, Sonoma	Napa, Sonoma
Plan Name	SCAN Classic	SCAN Compass	SCAN Heart First (C-SNP)	SCAN Balance (C-SNP)
Maximum Out-of-Pocket (MOOP)	\$3,400	\$5,000	\$3,400	\$3,400
Member Premium	\$43	\$28	\$47	\$47
Part B Premium Give Back	\$0	\$0	\$0	\$0
INPATIENT SERVICES				
PCP/ SPC Copay	\$0/\$15	\$0/\$15	\$0/\$15	\$0/\$15
Inpatient Hospital	\$220 per day (1-8) \$0 per day (9-90+)	\$320 per day (1-5) \$0 per day (6-90+)	\$200 per day (1-8) \$0 per day (9-90+)	\$200 per day (1-8) \$0 per day (9-90+)
Outpatient Hospital (Surgery)	\$225	\$225	\$225	\$225
Diagnostic Radiology	\$60	\$60	\$60	\$60
Urgent Care	\$15	\$25	\$15	\$15
RX COPAYS				
Preferred Retail	\$0/\$0/\$42/\$95/33%	\$0/\$0/\$42/\$95/33%	\$0/\$0/\$42/\$95/33%	\$0/\$0/\$42/\$95/33%
Standard Retail	\$7/\$17/\$47/\$100/33%	\$10/\$20/\$47/\$100/33%	\$7/\$17/\$47/\$100/33%	\$7/\$17/\$47/\$100/33%
Insulin Savings (T3)	\$25/\$35	\$25/\$35	\$25/\$35	\$0/\$0
SUPPLEMENTAL BENEFITS				
CORE EXTRAS	Vision, Transportation, Chiro/Acu, Podiatry, Hearing, SCAN Travel Assurance, SCAN on the go	Vision, Dental, Chiro/Acu, Therapeutic Massage, SCAN Travel Assurance, SCAN on the go	Vision, Chiro/Acu, Podiatry, Hearing, SCAN Travel Assurance, SCAN on the go	Vision, Chiro/Acu, Podiatry, Hearing, SCAN Travel Assurance, SCAN on the go
SOL FOR VIRTUAL CARE ACCESS	Abridge, Telehealth, HEALTHtech, Nurse Advice Line	Abridge, Telehealth, HEALTHtech, Nurse Advice Line	Abridge, Telehealth, HEALTHtech, Nurse Advice Line	Abridge, Telehealth, HEALTHtech, Nurse Advice Line
SOL FOR HEALTHY LIVING	Gym, BrainHQ	FitBit, Gym, BrainHQ, OTC, Weight Management	Gym, BrainHQ	Gym, BrainHQ
SOL FOR INDEPENDENCE	PERS	Returning to Home	PERS	PERS
SOL FOR CAREGIVERS	Caregiver Training, Chronic Condition Meals	Caregiver Training, Chronic Condition Meals	Caregiver Training, Chronic Condition Meals	Caregiver Training, Chronic Condition Meals
SOL FOR TOGETHERNESS	Headspace, SCAN Learning Communities	Headspace, SCAN Learning Communities	Headspace, SCAN Learning Communities	Headspace, SCAN Learning Communities

Santa Clara

Service Area/County List	Santa Clara	Santa Clara
Plan Name	SCAN Classic	SCAN Options
Maximum Out-of-Pocket (MOOP)	\$3,000	\$2,800
Member Premium	\$52	\$0
Part B Premium Give Back	\$0	\$0
INPATIENT SERVICES		
PCP/ SPC Copay	\$0/\$0-\$20	\$0/\$0-\$25
Inpatient Hospital	\$125 per day (1-5) \$0 per day (6-90)	\$175 per day (1-5) \$0 per day (6-90)
Outpatient Hospital (Surgery)	\$125	\$135
Diagnostic Radiology	\$120	\$0 (ultrasound); \$150 other
Urgent Care	\$20	\$20
RX COPAYS		
Preferred Retail	\$0/\$0/\$42/\$95/33%	\$0/\$0/\$40/\$90/33%
Standard Retail	\$10/\$12/\$47/\$100/33%	\$10/\$18/\$45/\$95/33%
Insulin Savings (T3)	\$25/\$35	\$25/\$35
SUPPLEMENTAL BENEFITS		
CORE EXTRAS	Vision, Chiro, Podiatry, Hearing, SCAN Travel Assurance, SCAN on the go	Vision, Transportation, Chiro/Acu, Therapeutic Massage, Hearing, SCAN Travel Assurance, SCAN on the go
SOL. FOR VIRTUAL CARE ACCESS	Abridge, Telehealth, HEALTHtech, Nurse Advice Line	Abridge, Telehealth, HEALTHtech, Nurse Advice Line
SOL. FOR HEALTHY LIVING	Gym, BrainHQ	Gym, BrainHQ, OTC
SOL. FOR INDEPENDENCE	PERS	PERS
SOL. FOR CAREGIVERS	Caregiver Training, Chronic Condition Meals	Respite Care, Caregiver Training, Chronic Condition Meals
SOL. FOR TOGETHERNESS	Headspace, SCAN Learning Communities	Headspace, SCAN Learning Communities

San Francisco

Service Area/County List	San Francisco
Plan Name	SCAN Classic
Maximum Out-of-Pocket (MOOP)	\$5,000
Member Premium	\$33
Part B Premium Give Back	\$0
INPATIENT SERVICES	
PCP/ SPC Copay	\$0/\$10
Inpatient Hospital	\$250 per day (1-7) \$0 per day (8-90+)
Outpatient Hospital (Surgery)	\$200
Diagnostic Radiology	\$60
Urgent Care	\$35
RX COPAYS	
Preferred Retail	\$0/\$0/\$42/\$95/33%
Standard Retail	\$10/\$12/\$47/\$100/33%
Insulin Savings (T3)	\$25/\$35
SUPPLEMENTAL BENEFITS	
CORE EXTRAS	Vision, Transportation, Chiro/Acu, Podiatry, Hearing, SCAN Travel Assurance, SCAN on the go
SOL. FOR VIRTUAL CARE ACCESS	Abridge, Telehealth, HEALTHtech, Nurse Advice Line
SOL. FOR HEALTHY LIVING	Gym, BrainHQ
SOL. FOR INDEPENDENCE	PERS
SOL. FOR CAREGIVERS	Caregiver Training, Chronic Condition Meals
SOL. FOR TOGETHERNESS	Headspace, SCAN Learning Communities

SCAN 2023 product grid

**New 2023
markets**

Plan Name	Southern California						Northern California						Arizona			NV		TX	
	Los Angeles	Orange	Riverside	San Bernardino	San Diego	Ventura	Napa/Sonoma	Santa Clara	San Francisco	Stanislaus	Alameda	San Mateo	Maricopa	Pima	Pinal	Clark	Nye	Harris	Bexar
Classic	X	X	X	X	X	X	X	X	X	X	X	X	X	X	X	X	X	X	X
Options						X		X											
Venture	X	X	X	X									X	X	X	X	X	X	X
Signature					X														
Alta					X														
Prime	X	X	X	X															
Compass							X									X	X		
Heart First		X	X	X	X		X				X	X	X	X	X	X	X	X	X
Balance	X	X					X			X	X	X	X	X	X	X	X	X	X
Embrace	X	X		X									X	X					
Connections / Connections at Home	X		X	X	X														
Affirm	X		X																
VillageHealth	X		X	X															
Healthy at Home	X	X	X	X															

X = new in 2023

Confidential and proprietary information. All rights reserved. 44

Our Mission To Keep Seniors Healthy & Independent



CONTENTS

1

INTRODUCTION

2

2023 SCAN HIGHLIGHTS

3

SUPPLEMENTAL BENEFITS

4

PRODUCT PORTFOLIO

5

BROKER RESOURCES

AGENT resources

HAVE MORE QUESTIONS?

Contact the SCAN Sales Support Team
(888) 445-2038

SalesSupportTeam@scanhealthplan.com

Mon - Fri (8 a.m. - 6 p.m. PST)

Need a contract?	SCANBrokerContracting@scanhealthplan.com
Commission questions?	SalesCompensation@scanhealthplan.com (562) 637-1220
Access the agent portal:	SCANAgentPortal.com You'll receive an email notification when access has been granted
Telephonic enrollment line:	(855) 662-7226 <i>Monday through Friday (8 a.m. - 6 p.m. Pacific Time)</i>
Submit paper enrollments:	SCAN Headquarters Enrollment, Reconciliation & Premium Billing Department 3800 Kilroy Airport Way, Suite 100 Long Beach, CA 90806

Member Services
Monday through Friday
(8 a.m. - 8 p.m. Pacific Time)

California	(800) 559-3500
-------------------	----------------

Arizona	(855) 650-7226
----------------	----------------

Nevada:	(855) 827-7226
----------------	----------------

Texas	(855) 844-7226
--------------	----------------

Need to find a...

Provider	www.scanhealthplan.com Click on "Find a Doctor & More" then "Doctor"
Pharmacy	www.scanhealthplan.com Click on "Find a Doctor & More" then "Pharmacy"
Medication	www.scanhealthplan.com Click on "Find a Doctor & More" then "Formulary Drug"

Preferred Pharmacy Network

CVS	H-E-B	Costco
Express Scripts	Walmart/Sam's Club	Kroger/Ralphs/Fry's
Rite Aid	Safeway/Randalls/Albertsons	and many more...

Delta Dental

www.deltadentalins.com
(855) 830-6583

In-language Support Services

Full Suite of Enrollment Materials

- ▶ Currently available in Spanish, Chinese and Korean.
- ▶ From enrollment to renewal, our in-language resources will help you better meet the needs of the communities you serve.
- ▶ Culturally relevant reference materials, including member newsletter.



Website Fully Translated:

scanhealthplan.com/es/ (*Spanish*)
scanhealthplan.com/zh/ (*Chinese*)
scanhealthplan.com/ko/ (*Korean*)



Broker Portal

Customized materials and self-service options



Broker Support Team

Multi-lingual agents dedicated to your success

The Future is **BRIGHT...**

270,000+ members and growing

- 4 states
- 20 counties
- New diversity focused products
- Competitive benefits
- Over 750 \$0 medications on the formulary

Let's grow together

- Get certified for 2023
- Attend a local area training
- Pre-order your AEP materials
- Count on your Broker Account Executive
- **SELL, SELL, SELL**

